

# CHEMISTRY

## A European Journal



### Accepted Article

**Title:** Influence of the Attachment of a Gold(I) Phosphine Moiety at the Upper Rim of a Calix[4]pyrrole on the Binding of Tetraalkylammonium Chloride Salts

**Authors:** Qinging Sun, Gemma Aragay, Andrea Pinto, Elisabet Aguiló, Laura Rodríguez, and Pablo Ballester

This manuscript has been accepted after peer review and appears as an Accepted Article online prior to editing, proofing, and formal publication of the final Version of Record (VoR). This work is currently citable by using the Digital Object Identifier (DOI) given below. The VoR will be published online in Early View as soon as possible and may be different to this Accepted Article as a result of editing. Readers should obtain the VoR from the journal website shown below when it is published to ensure accuracy of information. The authors are responsible for the content of this Accepted Article.

**To be cited as:** *Chem. Eur. J.* 10.1002/chem.201905160

**Link to VoR:** <http://dx.doi.org/10.1002/chem.201905160>

Supported by  
**ACES**

WILEY-VCH

# Influence of the Attachment of a Gold(I) Phosphine Moiety at the Upper Rim of a Calix[4]pyrrole on the Binding of Tetraalkylammonium Chloride Salts

Qingqing Sun,<sup>[a],[b]‡</sup> Gemma Aragay,<sup>[a]‡</sup> Andrea Pinto<sup>[c],[d]‡</sup>, Elisabet Aguiló<sup>[c]</sup>, Laura Rodríguez<sup>[c],[d]\*</sup> and Pablo Ballester<sup>[a],[e]\*</sup>

**Abstract:** We report the synthesis of an unprecedented mono-gold(I) phosphine complex based on a “two wall” aryl-ethynyl extended calix[4]pyrrole. We describe and compare the binding properties of the parent 10 $\alpha$ ,20 $\alpha$ -bis-aryl-ethynyl calix[4]pyrrole ligand and the prepared organometallic compound as receptors for tetraalkylammonium chloride salts in dichloromethane and acetone solutions. We describe the results of <sup>1</sup>H NMR, UV-vis titrations and isothermal titration calorimetry (ITC) experiments in DCM and acetone solution, aiming to thermodynamically characterize the formed complexes. The obtained results indicate a noticeable decrease in the binding affinity of the chloride for the mono-gold(I) receptor **1** compared to the parent ligand **2**. The increase in the negative value of the electrostatic surface potential at the center of the aromatic ring of the gold(I) *meso*-aryl-ethynyl substituent serves to explain the observed results and the presence in solution of the chloride complex of **1** as a mixture of two conformers.

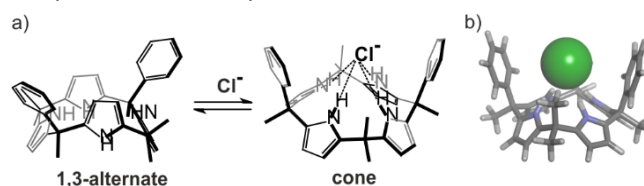
## Introduction

Calix[4]pyrroles are macrocyclic compounds consisting of four pyrrole units linked through their 2 and 5 positions via four tetra-substituted sp<sup>3</sup> hybridized *meso* carbon atoms.<sup>1,2</sup> In non-polar solvents, calix[4]pyrroles exist in solution in alternate conformations. Remarkably, they are known to undergo a conformational change from alternate to cone conformation upon anion binding. However, in the solid state, examples of bound calix[4]pyrroles with neutral polar substrates demonstrated that non-cone conformations are also possible.<sup>3,4</sup> The introduction of two aryl groups in opposed *meso*-carbons renders the so-called “two wall” calix[4]pyrrole as two possible constitutional isomers (**Figure 1**).<sup>4,5,6,7,8</sup> In cone conformation, the  $\alpha,\alpha$ -isomer displays a polar aromatic cleft ideal for the binding of mono-atomic spherical anions i.e. chloride. The anion establishes four simultaneous hydrogen bonds with the pyrrole NHs and it is sandwiched between the opposing *meso*-aryl

substituents, which are oriented in a parallel arrangement. Calix[4]pyrroles are known to function as heteroditopic receptors for ion-pairs, especially in non-polar organic solvents like chloroform or dichloromethane.<sup>9,10,11,12,13,14</sup> Normally, the cation prefers to bind opposite to the anion. That is, it is partially included in the shallow and electron rich aromatic cavity defined by the four-pyrrole rings in cone conformation that is opposite the bound anion. This type of binding geometry of the ion-paired complex is referred as a receptor separated binding mode. Alternatively, the cation might be located on top of the anion resulting in an ion-paired complex with close-contact binding mode.<sup>10</sup> In more polar organic solvents, like acetone or acetonitrile,<sup>15,16</sup> the influence of the cation in the binding process is reduced owing to the partial dissociation of the salt ion-pair and the resulting ion-paired complexes.

The introduction of electron withdrawing and electron donating groups on the *para* and *meta* positions of the *meso*-aryl substituents (upper rim) of “two wall”  $\alpha,\alpha$ -calix[4]pyrroles modulates their binding affinity towards anions.<sup>5</sup> Specifically, we described that anion binding with aryl-extended calix[4]pyrroles decreases with the increase in the number and electron-donating character of the aromatic substituents. This effect was attributed to an increase in the negative value of the electrostatic surface potential (ESP) at the centroid of the aryl substituent resulting in more repulsive anion- $\pi$  interactions.<sup>5</sup>

To the best of our knowledge, all described “two wall”  $\alpha,\alpha$ -calix[4]pyrrole receptors display C<sub>2v</sub> symmetry, that is their two *meso*-aryl substituents are identical. Likewise, the introduction of organometallic moieties in the *meso*-aryl substituents of these receptors remains unexplored.



**Figure 1.** a) Binding equilibrium between the 1,3-alternate conformational isomer of a free “two wall” aryl extended calix[4]pyrrole and the corresponding 1:1 complex with Cl<sup>-</sup> in cone conformation. b) Energy minimized (MM3) structure of the chloride complex. The receptor is shown in stick representation and the chloride as CPK model.

- [a] Institute of Chemical Research of Catalonia (ICIQ), The Barcelona Institute of Science and Technology (BIST), Av. Països Catalans, 16, 43007, Tarragona, Spain. E-mail: pballester@iciq.es
- [b] Universitat Rovira i Virgili, Departament de Química Analítica i Química Orgànica, c/Marcel·lí Domingo, 1, 43007, Tarragona, Spain
- [c] Departament de Química Inorgànica i Orgànica, Secció de Química Inorgànica, Universitat de Barcelona, Martí i Franquès 1-11, E-08028 Barcelona, Spain. E-mail: laura.rodriguez@qi.ub.es.
- [d] Institut de Nanociència i Nanotecnologia (IN2UB), Universitat de Barcelona, 08028 Barcelona, Spain
- [e] ICREA, Passeig Lluís Companys, 23, 08010, Barcelona, Spain
- ‡ These authors contributed equally to this work.

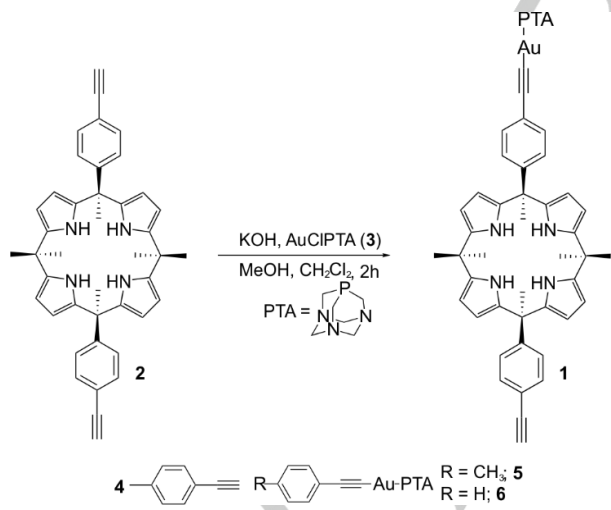
Supporting information for this article is given via a link at the end of the document.

In particular, the introduction of gold(I) alkynyl substituents in the *meso*-aryl groups would provide intrinsic luminescence properties to the receptors and their complexes.<sup>17</sup> In this sense, calix[4]arene receptors modified with alkynyl gold derivatives showed changes in their optical properties upon cation binding.<sup>18,19,20</sup> In addition, this type of substituents endow the

supramolecular receptors with the possibility to be involved in weak aurophilic interactions (Au...Au).<sup>21,22</sup>

Herein, we describe the synthesis of the “two wall”  $\alpha,\alpha$ -isomer aryl-extended calix[4]pyrrole **1** bearing one gold(I) alkynyl substituent in the *para*-position of only one of the two *meso*-aryl substituents (**Scheme 1**). We also describe the unusual binding properties of the mono-gold(I) alkynyl derivative **1** in dichloromethane (DCM) and acetone solutions towards tetraalkylammonium chloride salts. As could be expected, calix[4]pyrrole **1** acts as an excellent heteroditopic receptor in DCM solution, displaying an impressive selectivity for the binding of methyl-tri-octyl ammonium chloride (MTOACl) in comparison to tetra-butyl ammonium chloride (TBACl). It is important to note here that previous reports of tetraalkylammonium ion-pairs binding with heteroditopic calix[4]pyrrole receptors already demonstrated a large increase in the binding affinity of the salts featuring at least one methyl substituent in the organic cation. This observation was attributed to the superior fit of the methyl group in the shallow aromatic cavity opposite to the bound anion.<sup>12,23</sup>

In acetone solution, owing to the partial dissociation of the ion-pairs the binding selectivity of **1** seems to level off. However, in both solvents, the resulting 1:1 fully ion-paired complex (DCM) or partially dissociated ion-paired complex (acetone) feature the bound-host in two different geometries/conformations as inferred by the observation of two sets of separate proton signals in their <sup>1</sup>H NMR spectra. Remarkably, the results of Isothermal Titration Calorimetry (ITC) experiments, performed in acetone solution for the two receptors and tetraalkylammonium salts, fit nicely to a simple 1:1 binding model not taking in account ion-pairing processes.



**Scheme 1.** Synthesis of the mono-gold(I) phosphine calix[4]pyrrole derivative **1**. The molecular structure of the parent compound **2**, the gold(I) salt precursor **3** and the model systems **4**, **5** and **6** are also shown.

The derived apparent binding constant values and the results of DFT calculations provide support for the existence of stronger

repulsive chloride- $\pi$  interactions in the chloride complex of the organometallic receptor **1**, which might also explain its existence in solution as a mixture of conformers.

## Results and Discussion

### Synthesis.

The synthesis of the gold(I) phosphine calix[4]pyrrole receptor **1** was carried out starting from 10 $\alpha$ ,20 $\alpha$ -bis(4-[ethynylphenyl])calix[4]pyrrole **2** as precursor ligand (**Scheme 1**). Compound **2** was prepared following a reported literature procedure.<sup>24,25</sup>

The bis-alkynyl calix[4]pyrrole **2** was deprotonated by suspending it in a KOH methanol solution. DCM was added to the above suspension in order to obtain a solution. Next, a DCM solution of the AuCIPTA precursor complex **3** (PTA = 1,3,5-triaza-7-phosphaadamantane)<sup>26</sup> was added dropwise. After two hours of stirring, the reaction mixture was partially concentrated and hexane was added to induce the precipitation of a pale yellow solid. The mono-gold(I) aryl-ethynyl phosphine derivative **1** was isolated in moderate yield (60%) after precipitation of the solid from a CH<sub>2</sub>Cl<sub>2</sub>/hexane mixture. Compound **1** was fully characterized by a complete set of high resolution spectra (SI).

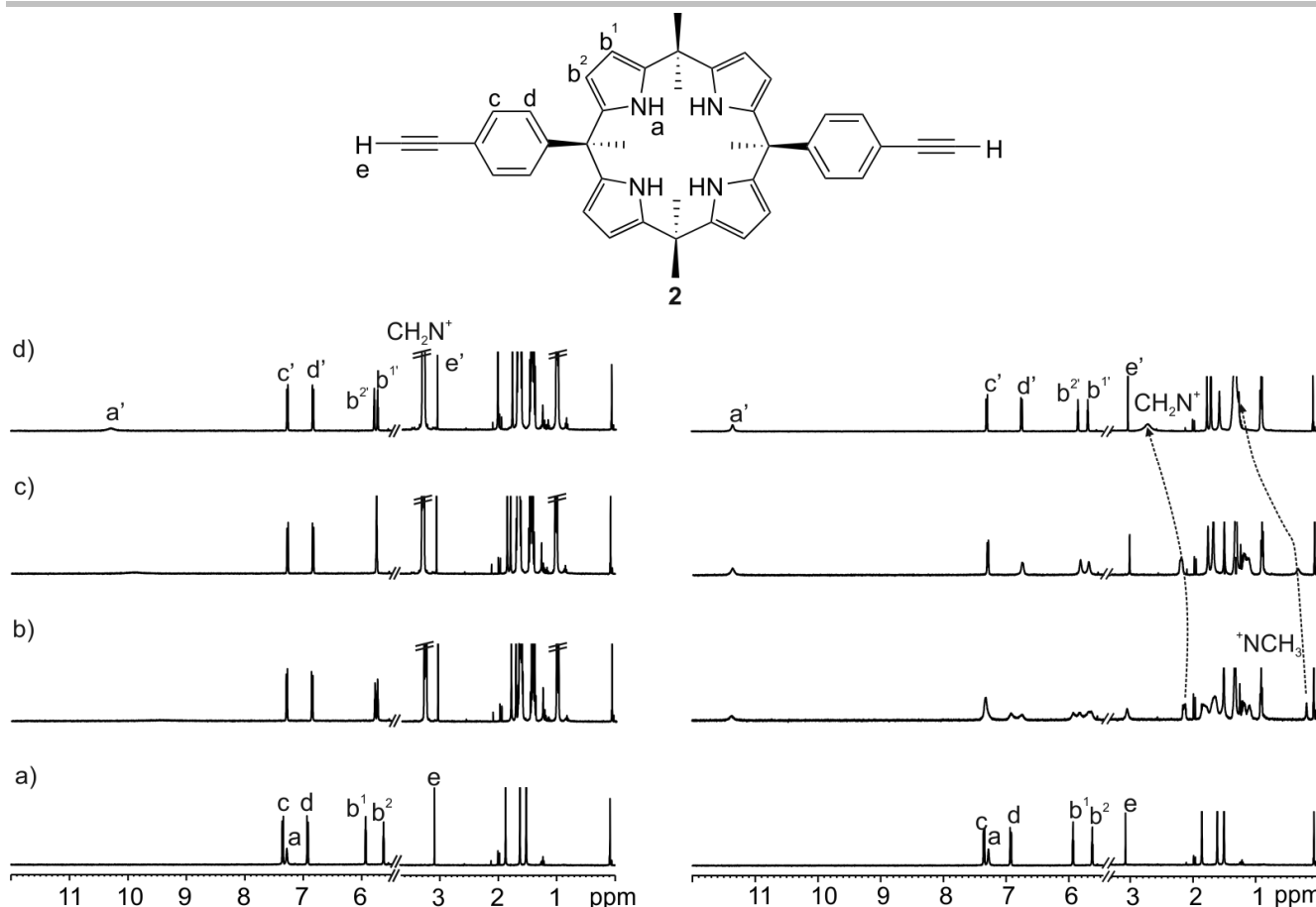
### Photophysical characterizations.

The absorption and emission ( $\lambda_{\text{exc}} = 300 \text{ nm}$ ) spectra of the mono-gold(I) phosphine calix[4]pyrrole **1** and the bis-aryl-ethynyl parent ligand **2** were recorded in dichloromethane solution (10  $\mu\text{M}$ ). The most relevant absorption and emission bands are detailed in **Table 1**.

Excitation at 300 nm of a dichloromethane solution of **1** resulted in two weak emission bands with maxima at ca. 370 nm and 465 nm. The bands were assigned to fluorescence and phosphorescence <sup>3</sup>IL transitions, respectively (SI). The increase of intensity of the lowest energy emission band upon oxygen removal supports the phosphorescence <sup>3</sup>IL emission assignment. On the other hand, no significant emission was detected for a solution of **2** in the same solvent neither at room temperature nor at 77 K.

**Table 1** Absorption ( $\lambda_{\text{max}}$  (nm), ( $\epsilon \cdot 10^{-3} \text{ M}^{-1} \text{ cm}^{-1}$ )) and emission (solution,  $\lambda_{\text{max}}$  (nm)) data of compounds **1** and **2** in  $1 \cdot 10^{-5} \text{ M}$  dichloromethane solution at 298 K and 77 K ( $\lambda_{\text{exc}} = 300 \text{ nm}$ ). Fluo and Phos refer to fluorescence and phosphorescence emission bands, respectively.

Compound	Absorption	Emission	
		298K	77K
<b>2</b>	243 (38.1), 253sh (27.8), 280 (4.15)		
<b>1</b>	243 (29.11), 253sh (22.06), 274 (24.80), 288 (26.52), 299 (21.54)	339, 370 (Fluo) 430, 465 (Phos)	430, 470



**Figure 2.** Left panel) <sup>1</sup>H NMR spectra acquired during the titration of **2** (1 mM) with incremental amounts of TBACl in DCM solution: a) 0 equiv; b) 3.0 equiv c) 5.0 equiv and d) 10 equiv. Right panel) <sup>1</sup>H NMR spectra acquired during the titration of **2** (1mM) with incremental amounts of MTOACl in DCM solution: a) 0 equiv; b) 0.5 equiv; c) 1.0 equiv; and d) 2.0 equiv. See top panel for proton assignment. Primed signals correspond to protons in bound **2**.

This result is a nice example on how heavy-atom-induced spin-orbital coupling effects can induce luminescence of non-emissive chromophores,<sup>27,28</sup> in particular, from metal-perturbed  $\pi$ - $\pi^*$  excited states localized on aryl-ethynyl ligands through fast population of the triplet state by intersystem crossing.<sup>29,30</sup>

### Binding studies of the 10 $\alpha$ ,20 $\alpha$ -bis-aryl-ethynyl calix[4]pyrrole **2** with tetraalkylammonium chloride salts

#### <sup>1</sup>H NMR binding studies in DCM solution

First, we probed the interaction of the parent bis-aryl-ethynyl calix[4]pyrrole receptor **2** with TBACl and MTOACl in DCM solution using <sup>1</sup>H NMR spectroscopy. The <sup>1</sup>H NMR spectrum of **2** in DCM (~ 1 mM) showed sharp and well-resolved proton signals in agreement with a C<sub>2v</sub> symmetry (Figure 2a). The incremental addition of TBACl (0.1-12 equiv) to the above solution induced chemical shift changes on some of the proton signals of **2** (Figure 2 left panel and SI). This observation indicated that the binding process with the ion-pair experienced fast exchange dynamics on the chemical shift time-scale. The NH proton signal of **2** moved downfield ( $\Delta\delta \sim + 3.0$  ppm) suggesting its involvement in hydrogen-bonding interactions with the chloride. The aromatic proton signals shifted slightly upfield ( $\Delta\delta \sim - 0.1$  ppm) in response to the chloride- $\pi$  interactions established in the complex Cl<sup>-</sup>**2**•TBA. One of the  $\beta$ -pyrrole

protons moved upfield and the other downfield. These chemical shift changes are diagnostic that chloride binding is concomitant with a change in receptor's conformation from alternate, in the free state, to cone, in the bound receptor (See Figure 1a for details in calix[4]pyrrole conformers). Finally, the methylene protons alpha to the nitrogen atom of the TBA cation shifted downfield as its concentration was increased. This behaviour supports the involvement of the TBA cation in the ion-paired complex formed in solution, Cl<sup>-</sup>**2**•TBA, featuring a receptor separated binding mode. The TBA cation binds opposite to the anion in the electron-rich aromatic cavity defined by the pyrrole ring in cone conformation. In this location, it experiences the shielding effect of the pyrrole rings and resonates slightly upfield ( $\Delta\delta = - 0.12$  ppm when 0.1 equiv are added) with respect to the chemical shift value of the TBA in the TBACl ion-pair ( $\delta = 3.3$  ppm). As the concentration of TBA is increased, the amount of TBA in the free ion-pair, TBACl, also increases with respect to that bound in the ion-paired complex, Cl<sup>-</sup>**2**•TBA. This produces that the signal of the TBA methylene protons moves towards  $\delta = 3.3$  ppm owing to the fast chemical exchange regime that is operative for the equilibrium between the TBA cation in the salt ion-pair, TBACl, and ion-paired complex, Cl<sup>-</sup>**2**•TBA. The partial formation of the Cl<sup>-</sup>**2**•TBA complex in an equimolar mixture of the binding partners at a concentration suitable to acquire the <sup>1</sup>H



NMR spectrum (~1 mM) allowed us to estimate that the binding constant of the ClC2•TBA complex considering a 1:1 stoichiometry must be lower than  $10^4 \text{ M}^{-1}$ . The fit of the chemical shift changes experienced by the  $\beta$ -pyrrole protons signals during the titration to a theoretical binding model was good and afforded a more accurate value for the binding constant as  $K(\text{ClC2}\cdot\text{TBA}) = 2.7 \times 10^2 \text{ M}^{-1}$  (SI).

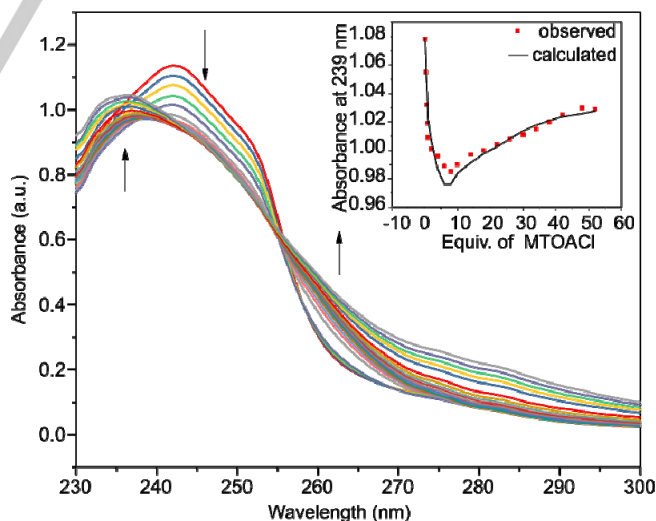
The analogous  $^1\text{H}$  NMR titration of receptor **2** with MTOACI provided significant different results (Figure 2, right panel). Thus, the addition of 0.5 equiv of MTOACI produced broadening of some signals of the receptor, as well as the observation of two sets of separate signals of equal intensity for others. One of the two sets corresponded to the free receptor, while the new one was assigned to the protons in bound **2**. In the presence of 1 equiv of MTOACI only the set of signals corresponding to bound **2** was detected. The addition of more than 1 equiv of the ion-pair salt induced the sharpening of the signals of the receptor but it did not produce any chemical shift changes. Taken together, these observations indicate that **2** and MTOACI formed a 1:1 ion-paired complex, ClC2•MTOA, displaying slow/intermediate exchange dynamics on the chemical shift timescale between the free and bound receptor. We can also estimate that the binding constant value for the 1:1 complex  $K(\text{ClC2}\cdot\text{MTOA})$  is larger than  $10^4 \text{ M}^{-1}$ , owing to its almost quantitative formation in an equimolar mixture of the binding partners. In analogy to the TBA cation, the MTOA cation must be also located in the electron-rich and shallow cavity defined by the pyrrole rings of bound **2**. The methyl group, alpha to the nitrogen atom of the MTOA cation, resonates highly upfield shifted ( $\delta = 0.19 \text{ ppm}$ ) owing to its deeper inclusion in the aromatic cavity, where it experiences the strong shielding effect caused by the four aromatic pyrrole rings. The methylene groups alpha to the nitrogen atom of the MTOA cation are more exposed and affected to a lesser extent. We also assigned a separated receptor binding geometry to the ClC2•MTOA complex. When more than 1 equiv of MTOACI is added, the signals of the methyl and methylene proton atoms alpha to the nitrogen start moving downfield. This dynamic behaviour derives from fast chemical exchange process that exists between the MTOA cation in free and bound ion-pairs, MTOACI and ClC2•MTOA, respectively.

The increase in affinity constant for the ClC2•MTOA complex (estimated as  $> 10^4 \text{ M}^{-1}$ ) compared to that of the ClC2•TBA counterpart ( $K(\text{ClC2}\cdot\text{TBA}) = 2.7 \times 10^2 \text{ M}^{-1}$ ) supports that receptor **2** is acting as a heteroditopic receptor in DCM solution. The superior fit of the methyl group of the MTOA cation in the aromatic cavity opposed to the bound chloride is mainly responsible of the observed selectivity.

### UV-vis titrations in DCM solution

In order to determine an accurate value for the binding constant of the ClC2•MTOA complex, we also probed the binding process using UV-vis titrations ( $[\mathbf{2}] = 20 \mu\text{M}$ ). We observed a non-monotonic behaviour for the absorbance changes at most wavelengths (Figure 3). For example, at the maximum of the band centred at 242 nm, the absorbance intensity decreased until the addition of 6.4 equiv and started to increase when more equivalents of the salt were added. This biphasic behaviour

suggested the co-existence in solution, at this lower concentration, of the anionic chloride complex  $[\text{ClC2}]^-$  and the ion-paired counterpart ClC2•MTOA in significant extents. Flood and co-workers analysed  $^1\text{H}$  NMR titration data of a triazolophane receptor with TBACI in DCM solution, displaying fast chemical exchange on the chemical shift timescale, as well as the corresponding UV-vis data using an elaborated binding model.<sup>31</sup> We applied a closely related binding model, which considers the ion-pairing of the MTOACI salt ( $K_{\text{ip}}$ ), the formation of the 1:1 chloride anionic complex,  $[\text{ClC2}]^-$  ( $K_{1:1}$ ) and its subsequent ion-pairing to yield the ternary complex ClC2•MTOA ( $K_{1:1:\text{ip}}$ ), to perform the mathematical analysis of the UV-vis titration data using the HypSpec software.<sup>32</sup> It is worth to note that the unrestricted factor analysis in HypSpec of the UV-vis titration data already revealed three mathematically significant light absorbing species. During the fit, we fixed the value of the ion-pairing constant of the MTOACI salt as  $K_{\text{ip}} = 3.0 \times 10^4 \text{ M}^{-1}$ .<sup>31</sup> We manually optimized the values of  $K[\text{ClC2}]^-$  and  $K(\text{ClC2}\cdot\text{MTOA})$ . The returned values for the best fit, which also provided sensible UV-vis spectra for  $[\text{ClC2}]^-$  and ClC2•MTOA, were  $K[\text{ClC2}]^- = 6.3 \times 10^4 \text{ M}^{-1}$  and  $K(\text{ClC2}\cdot\text{MTOA}) = 6.3 \times 10^8 \text{ M}^{-2}$ . Based on Fuoss' law,<sup>33</sup> as well as in previous results reported by Flood and co-workers, the equilibrium constant of complex ion-pairing constant  $K([\text{ClC2}]^- \leftrightarrow \text{ClC2}\cdot\text{MTOA})$  should be smaller than the  $K_{\text{ip}}$  of the MTOACI salt. Based on the values returned from the fit, we calculated  $K([\text{ClC2}]^- \leftrightarrow \text{ClC2}\cdot\text{MTOA}) = 1.0 \times 10^4 \text{ M}^{-1}$ . The value is in agreement with our expectations, thus providing some indication of the quality and fit of the data analysis. If the ClC2•MTOA complex is considered to have a 1:1 stoichiometry, its apparent average binding constant can be estimated as  $K(\text{ClC2}\cdot\text{MTOA}) = (6.3 \times 10^8 \text{ M}^{-2})^{1/2} = 2.5 \times 10^4 \text{ M}^{-1}$ . In doing so, we can determine that the ClC2•MTOA complex is two orders of magnitude more stable than the ClC2•TBA analogue.



**Figure 3.** UV-vis spectra acquired for the titration of **2** (20  $\mu\text{M}$ ) with MTOACI (0-52 equiv) in DCM solution. Inset: Fit of the titration data to the extended binding model at 239 nm. The biphasic behaviour of the titration data is nicely reproduced by the extended binding model (see text for details).

The analogous titration of **2** with incremental amounts of TBACl lead to a steady diminution of absorbance. Even after the addition of 32 equiv of the salt, we did not reach the saturation point. We concluded that the observed spectral changes were not suitable for further mathematical analysis of the binding process. Most likely, at this concentration ( $[2] = 20 \mu\text{M}$ ) the extent at which the complexes (anionic and ion-paired) are formed in solution is low and the absorbance changes might be mainly related to the increase of the dielectric constant of the media.

Taken together, the results of the UV-vis titrations support that at  $\mu\text{M}$  concentrations the anionic complex  $[\text{Cl} \cdots \text{2}]^-$  is present at very low concentrations and the ion-paired counterpart, independently of the cation, is the almost exclusive complex formed in solution. This finding is a direct consequence of the fact that the values of the ion-pairing constant in DCM for the salts and complexes are larger than  $10^4 \text{ M}^{-1}$ .

#### ITC titration in DCM solution

The binding of MTOACl with receptor **2** in DCM was also investigated by isothermal titration calorimetry (ITC). Noteworthy, the resulting binding isotherm showed a single sigmoidal behaviour that nicely fits to a simple 1:1 binding model (SI). The determined apparent binding constant was  $K(\text{Cl} \cdots \text{2} \cdots \text{MTOA}) = 6.0 \pm 0.5 \times 10^4 \text{ M}^{-1}$ , which is in the same order of magnitude to the one estimated for the formation of the complex in a single step from the UV-vis titration (*vide supra*). The binding of chloride to receptor **2** is enthalpically driven and highly exothermic, as might be expected for a binding process in taking place in a non-polar solvent.

#### Binding studies of the mono-gold(I) phosphine calix[4]pyrrole derivative **1** with tetraalkylammonium chloride salts

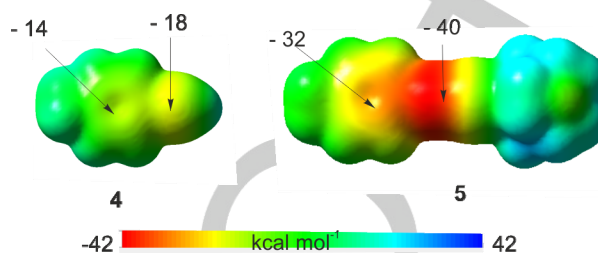
Having clarified the binding properties of the parent ligand **2** towards MTOACl and TBACl in DCM solution, we felt prepared to analyse those of the organometallic gold(I) derivative **1**.

#### General considerations

The substitution of the terminal alkynyl hydrogen atom of an aryl-ethynyl substituent by a gold(I)•PTA residue should have a strong impact on the electronic properties of the phenyl group. We therefore performed DFT calculations in order to determine the modification of the electrostatic surface potential (ESP) at the centre of the aromatic ring provoked by this substitution. We computed the ESPs of 1-ethynyl-4-methyl benzene **4** and [2-[4-(methyl)phenyl]ethynyl](1,3,5-triaza-7-phosphaadamantane- $\kappa\text{P}$ )Au(I) **5** (Scheme 1), as model systems of the two different aromatic walls present in the mono-gold(I) phosphine calix[4]pyrrole derivative **1**, at the BP86<sup>34,35</sup>-D3<sup>36</sup>/def2-SVP level of theory using GAUSSIAN version 09 (Figure 4).<sup>37</sup>

As shown in Figure 4, the introduction of the gold(I)•PTA as terminal residue of the ethynyl substituent doubles the ESP value at the centre of the aryl ring. This result indicates that the

aryl ring with the gold(I)•PTA unit becomes more electron rich and prone to be involved in a more repulsive anion- $\pi$  interaction than an analogous compound with a simple ethynyl substituent.

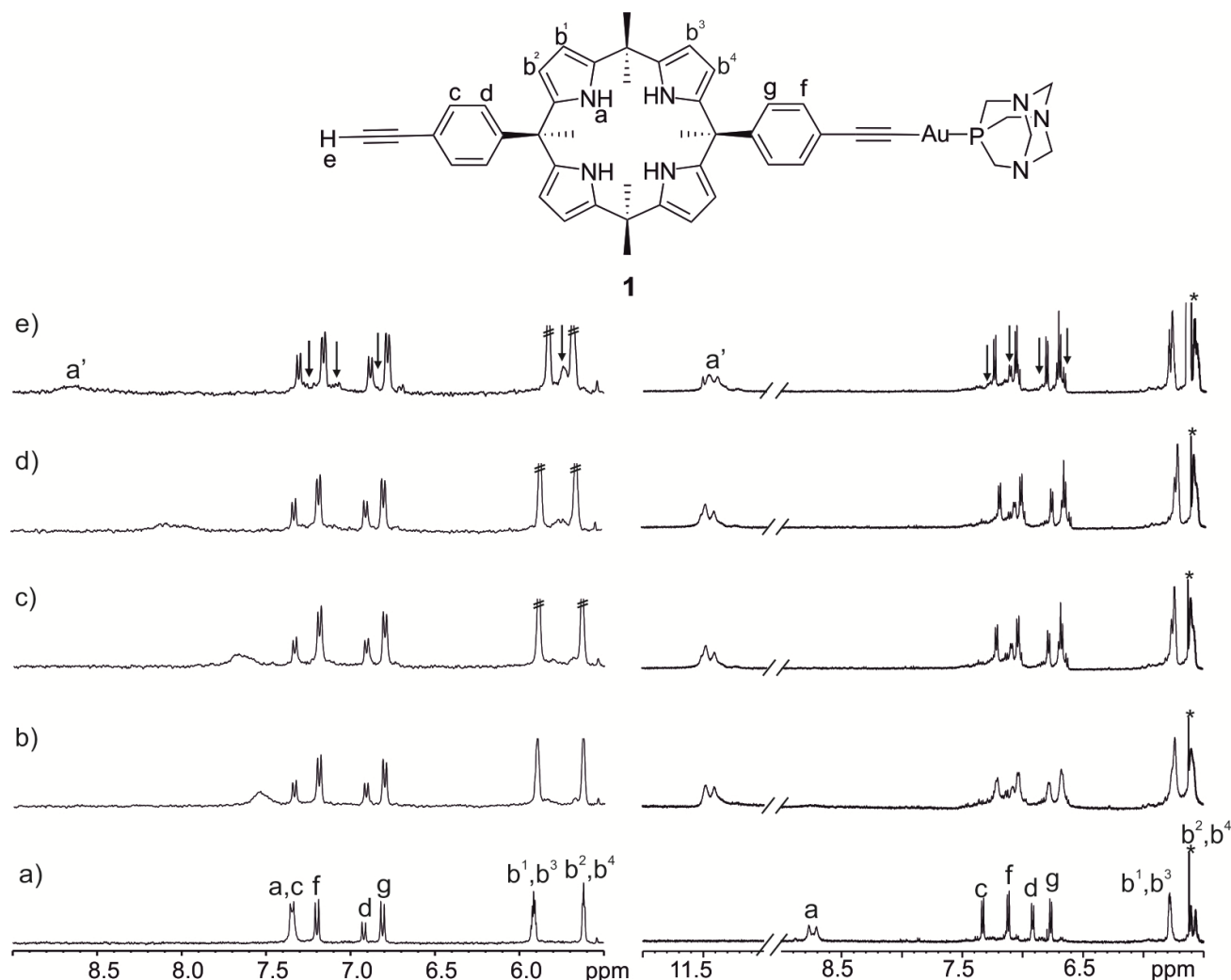


**Figure 4.** Calculated ESP values for the model systems **4** and **5** of the aromatic walls in **1**. ESP cubes mapped at electron density value of 0.0004 a.u.

We estimated that ESP values of the order of  $-12 \text{ kcal/mol}$  at the centre of the aromatic ring corresponded to a free energy value of the chloride- $\pi$  interaction close to  $0 \text{ kcal/mol}$ . We also demonstrated the existence of a linear-relationship between ESP and  $\Delta\Delta G$  values for chloride- $\pi$  interactions.<sup>5</sup> By extrapolation of this linear relationship, we assign a significant repulsive interaction,  $\Delta\Delta G \sim 0.8 \text{ kcal mol}^{-1}$ , between the anion and the aryl of the gold(I)-ethynyl phosphine substituent (ESP =  $-32 \text{ kcal mol}^{-1}$ ).

#### <sup>1</sup>H NMR titrations in DCM solution.

We first probed the interaction of mono-gold(I) phosphine calix[4]pyrrole derivative **1** with MTOACl and TBACl using <sup>1</sup>H NMR spectroscopy. Calix[4]pyrrole **1** has a reduced solubility in DCM solution. Its <sup>1</sup>H NMR spectrum in DCM solution showed four aromatic proton signals in agreement with a  $C_s$  symmetry. The aromatic protons for the ethynyl substituted *meso*-phenyl group resonate as doublets at  $\delta = 7.34$  and  $6.92 \text{ ppm}$ . The latter signal corresponds to the aromatic proton *ortho* to the *meso*-carbon. In turn, the aromatic protons of the *meso*-phenyl bearing the *p*-ethynyl gold(I)•PTA substituent appear slightly upfield shifted at  $\delta = 7.19$  and  $6.81 \text{ ppm}$  (Figure 5a - left panel). The difference observed in chemical shifts is in agreement with the *meso*-phenyl having the pristine ethynyl substituent being more electron-poor, as it is also derived from the DFT calculations. The protons of the PTA ligand appear as three separate signals. Two doublets corresponding to the axial and equatorial protons of the six-membered ring containing the three nitrogen atoms and one singlet for the methylene protons connecting the nitrogen atoms to the phosphorus. The four chemically non-equivalent  $\beta$ -pyrrole proton (Hb<sup>1</sup>-Hb<sup>4</sup>) produced only two separate signals. The addition of incremental amounts of each salt to separate DCM solutions of **1** produced changes in the registered <sup>1</sup>H NMR spectra that are identical to those described by the parent ligand **2** in the corresponding previous section.



**Figure 5.** Left panel) Downfield region of the  $^1\text{H}$  NMR spectra acquired during the titration of **1** (1 mM) with incremental amounts of TBACl in DCM solution: a) 0 equiv; b) 0.5 equiv; c) 1.0 equiv; d) 2.0 equiv and e) 3.0 equiv. Right panel) Downfield region of the  $^1\text{H}$  NMR spectra acquired during the titration of **1** (1mM) with incremental amounts of TBACl in acetone- $d_6$  solution: a) 0 equiv; b) 0.5 equiv; c) 1.0 equiv; d) 2.0 equiv and e) 3.0 equiv. See top panel for proton assignment. Primed signals correspond to protons in bound **1**. Black arrows correspond to a new set of emerging proton signals for the bound **1**.

The most relevant changes are the downfield shift of the pyrrole NH protons of the bound receptor indicating the involvement of these protons in hydrogen bonding interactions with the bound anion. In short, the mono-gold(I) phosphine **1** also acts as a heteroditopic receptor for ion-pairs in DCM solution.<sup>38</sup> The obtained results served to estimate that the binding constant  $K(\text{ClCl}\cdot\mathbf{1}\cdot\text{MTOA})$  is still larger than  $10^4 \text{ M}^{-1}$ . On the other hand, the fit of the chemical shift changes experienced by the protons of **1** in the titration with TBACl to a 1:1 binding model assigns the value of  $K(\text{ClCl}\cdot\mathbf{1}\cdot\text{TBA})$  lower than  $50 \text{ M}^{-1}$  (Figure 5– left panel and SI). The reduction in the magnitude of the binding constant for the  $\text{ClCl}\cdot\mathbf{1}\cdot\text{TBA}$  compared to that of  $\text{ClCl}\cdot\mathbf{2}\cdot\text{TBA}$  can be used to assign a value of  $0.6 \text{ kcal mol}^{-1}$  as a minimum estimate of the chloride- $\pi$  interaction that putatively operates in the former. Gratifyingly, this value is in the same order of magnitude with our predictions.

Noteworthy, we encountered a much-unexpected observation in the  $^1\text{H}$  NMR titration experiments of **1** in DCM solution. That is,

the appearance of second set of signals for the bound receptor **1** (Figure 5 - left panel). These signals became visible when we added the salt over the equimolar point and remained as low intensity signals after further incremental addition. We surmised that the ion-paired chloride complex of **1** could be present in solution as a mixture of two conformers of the bound receptor.

#### Attempts to perform UV-vis titrations of **1** in DCM solution.

We titrated a solution of **1** in DCM ( $[\mathbf{1}] = 10 \mu\text{M}$ ) with incremental amounts of MTOACl (0- 75 equiv) maintaining the concentration of the receptor constant throughout the titration. We observed the steady decrease of the absorbance of all the bands in response to the addition of the salt. Surprisingly to us, the change of absorbance did not reach saturation or showed signs of a biphasic behaviour as observed for **2**. The UV-vis titration of **1** in DCM solution using TBACl displayed an identical behaviour (SI).

We prepared the organometallic gold complex 2-phenyl-ethynyl-(1,3,5-triaza-7-phosphaadamantane- $\kappa$ P)Au(I), **6** (Scheme 1), as model system of the metallated aromatic wall of **1**, in order to examine the effect caused by the incremental addition of tetraalkylammonium chloride salts on its absorption spectrum. We were surprised to discover that the absorbance of the UV-vis spectrum of **6** in DCM solution decreased as the amount of the salt increased (SI). Based on these results, we concluded that UV-vis spectroscopy is not a suitable technique to study the binding of chloride to the mono-gold(I) alkynyl receptor **1**. The absorption spectrum of the chromophore is modified in response to a process that is not directly related to the chloride binding.

#### Additional $^1\text{H}$ NMR titrations of **1** in acetone solution.

In order to gain further evidence of the presence of two chloride complexes of **2** in solution, possibly a mixture of conformers, we performed additional titration experiments of **1** with the two salts in acetone solution. In acetone solution, the ion-pairing is expected to be weaker and this might facilitate the formation of the second chloride complex to a different extent. Moreover, the oxygen atom of acetone is a good hydrogen bond acceptor. The putative formation of hydrogen bonds between the solvent and dangling pyrrole NHs could favour the chloride bound receptor to adopt other conformations than the cone. In this respect, we observed in the solid-state that "two wall" calix[4]pyrroles adopt alternate conformation when bound to polar solvents like acetone or acetonitrile (see SI for X-ray of **2**).<sup>4,39</sup>

The gold(I) metallated calix[4]pyrrole **1** also features a very reduced solubility in acetone- $d_6$ . We titrated 1 mM solutions of **1** with incremental amounts of both salts, TBACl and MTOACl, in separate NMR tubes. Contrary to the experiments carried out in DCM solution, but in agreement with our expectations, the results of the titrations with the two salts are quite similar. In short, the more polar environment provided by acetone minimizes ion-pairing and **1** behaves mainly as a monotopic anion receptor (Figure 5 – right panel and SI).

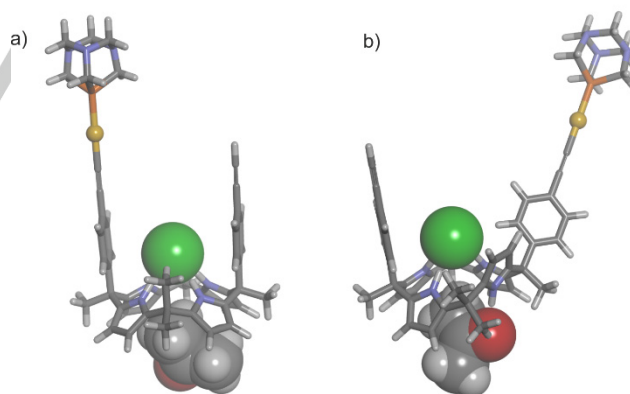
In both titrations, the chloride binding saturates after the addition of 1 equiv of the salt. The addition of more than 1 equiv of the salt induces small changes in the protons of the bound receptors. All in all, these results are consistent with a binding affinity of **1** for chloride in acetone- $d_6$  solution,  $K[\text{Cl}^-]$ , larger than  $10^4 \text{ M}^{-1}$ . Unfortunately, at this point, the lack of accurate binding constant values for the  $[\text{Cl}^-]$  and  $[\text{Cl}^-]_2$ <sup>40</sup> anionic complexes in acetone- $d_6$  does not allow us to test our theoretical predictions in favour of the energetically more favourable  $[\text{Cl}^-]_2$  complex, owing to the reduced repulsive chloride- $\pi$  interactions (see section on ITC experiments in acetone to overcome this limitation).

#### Molecular Modelling Studies

The results above show that the  $[\text{Cl}^-]_2$  anionic complex (acetone solution) and its ion-paired counterparts  $\text{Cl}^- \cdot \text{TBA}/\text{MTOA}$  (DCM solutions) are present in solution as single conformers featuring a unique binding geometry in the latter case. In striking contrast, the complexes of the mono-gold(I) phosphine calix[4]pyrrole **1** exist in solution as mixture of

two conformers and possibly with different binding geometries. We ascribed this difference to the existence of stronger repulsive chloride- $\pi$  interactions<sup>41,42</sup> in the case of the  $[\text{Cl}^-]$  complex. These energetic repulsions might induce the bound receptor to adopt a conformation different from the cone. The increase in repulsive chloride- $\pi$  interactions derives from the more electron rich nature of the *meso*-phenyl ring equipped with the gold(I)-PTA ethynyl substituent that is present in **1**. For the same token, the alkynyl  $\pi$ -system covalently bound to the Au<sup>I</sup> atom largely increases its electron density and may energetically favour the location of the tetraalkylammonium cation close to it instead of opposed to the bound chloride. This arrangement of the anion and the cation will result in the formation of an ion-paired complex with close-contact binding geometry having an energy in par with the alternative receptor-separated binding mode even when the bound receptor adopts the cone conformation. For ion-paired complexes in which the bound receptor is not in cone conformation, the close-contact binding geometry should be likely preferred.

In order to assign relative energies and structures to the different binding modes hypothesized for the  $[\text{Cl}^-]$  complex we performed DFT calculation at the BP86<sup>34,35</sup>-D3<sup>36</sup> def2-SVP level of theory and a continuum solvent model using GAUSSIAN 09.<sup>37</sup> Figure 6 depicts the energy-minimized structures of the  $[\text{Cl}^-]$  complexes in which the receptor adopts cone and half-cone conformations. For a fairer comparison of energies, we introduced an implicit molecule of acetone in the structures. This molecule satisfies the hydrogen-bonding needs of the dangling NH pyrrole on the half-cone bound receptor conformation. The calculations assign an energetic advantage of 2.2 kcal mol<sup>-1</sup> to the  $[\text{Cl}^-]$  complex with the receptor in cone conformation (Figure 6a).



**Figure 6.** Energy minimized structures BP86-D3 def2-SVP of  $[\text{Cl}^-]$ : a) receptor in cone conformation; b) receptor in half-cone conformation. The receptor is shown in ball and stick representation. The chloride and the implicit acetone as CPK models. The gold atom is displayed as scaled ball and stick representation. The calculation assigns an energy advantage of 2.2 Kcal mol<sup>-1</sup> to the complex with the receptor in cone conformation.

We postulate that the two sets of proton signals observed for bound **1** in the  $^1\text{H}$  NMR titrations performed in DCM- $d_2$  and acetone- $d_6$  correspond to the two binding geometries of the



[ClC1] complex.<sup>43,44</sup> The one featuring receptor **1** in cone conformation is energetically favoured and present in solution largely. We did not compute the structures for the receptor separated or close contact ion-paired complexes of ClC1•TBA/MTOA because experimentally the cation exchange between the free and bound state is fast on the chemical shift timescale and also a putative chemical exchange between the two sites of the complex should also take place in the same dynamic regime. Consequently, cation exchange processes cannot be considered as responsible for the observation of two separate proton signals of the bound receptor.

#### Isothermal Titration Calorimetry Experiments in acetone.

The assessment of accurate values for the binding constants of the anionic complexes formed in acetone was not possible using UV-vis titrations. The absorbance of the solvent is in the range of the absorbance of receptors **1** and **2**. Instead, we performed isothermal titration calorimetry (ITC) experiments (direct and reverse titrations) to characterize thermodynamically the binding processes of both tetraalkylammonium chloride salts, TBACl and MTOACl, with the two receptors **1** and **2**.

In all cases, the resulting exothermic binding isotherms showed a single sigmoidal behaviour with the inflexion point centred at a 1:1, receptor:salt, ratio. Consequently, we fit all isotherms using a simple 1:1 binding model and the thermodynamic parameters returned from the fit ( $\Delta H$  and  $K_a$ ) are referred as apparent values owing to the simplification of the model used, which does not take into account the ion-pairing processes that might occur in this solvent. In other words, we consider that at the concentrations used for the titration, both the salt and the complex are almost fully dissociated. **Table 2** summarizes the thermodynamic parameters determined from the ITC experiments.

**Table 2.** Apparent binding constants ( $K_a$ , M<sup>-1</sup>), enthalpies ( $\Delta H$ , Kcal mol<sup>-1</sup>) and free energies ( $\Delta G$ , Kcal mol<sup>-1</sup>) of the binding equilibria of **1** and **2** with TAAcI salts (TAA = TBA<sup>+</sup> or MTOA<sup>+</sup>) in acetone at 295 K using direct ITC titrations.<sup>45</sup>

Receptor	<b>1</b>		<b>2</b>	
	TBACl	MTOACl	TBACl	MTOACl
$K_a \times 10^{-4}$	1.0 ± 0.1 <sup>a</sup>	2.4 ± 0.2 <sup>a</sup>	4.8 ± 0.4 <sup>b</sup>	7.1 ± 0.9 <sup>b</sup>
$\Delta H$	-3.6 ± 0.2 <sup>a</sup>	-2.1 ± 0.4 <sup>a</sup>	-3.0 ± 0.1 <sup>b</sup>	-3.4 ± 0.1 <sup>b</sup>
$\Delta G$	-5.3 ± 0.1	-6.0 ± 0.1	-6.3 ± 0.1	-6.5 ± 0.1

<sup>a</sup>  $K_a$  and  $\Delta H$  are the average values from two independent direct titrations (salt over receptor). Errors are reported as standard deviation. <sup>b</sup>  $K_a$  and  $\Delta H$  are the average values from one direct titration (salt over receptor) and one reverse titration (receptor over salt). Errors are reported as standard deviation of the two measurements.

We can draw several conclusions from the listed data. Firstly, for a given receptor the determined value of the binding constant for its anionic chloride complex should be identical, independently of the salt used as chloride precursor. This would be the expected result if anionic complexes and salts were completely dissociated. However, the obtained results show differences in the binding constant determined for the two salts with a single

receptor. For example, the value of  $K_a$ [ClC1] is slightly larger (double) when MTOACl is used as chloride precursor instead of TBACl. This finding is also observed with receptor **2**. Most likely, these results derive from not fully dissociation of ion-pairs in acetone solution. Nevertheless, we consider that in acetone solution the effect of the cation (doubling the  $K_a$  values) is markedly reduced compared to DCM solution (two orders of magnitude difference in  $K_a$  values). Secondly, we have now accurate values for the apparent binding constants of the two receptors with chloride, which although not being identical, they can be used to calculate the effect exerted by the putative chloride- $\pi$  interaction operative in the complexes with receptor **1**. Thus by subtracting the free energies of binding of the two complexes produced by the two salt precursors, we derived a value between 1 – 0.5 kcal mol<sup>-1</sup> for the repulsive interaction. This estimate agrees nicely with the calculated one using DFT calculations (0.8 kcal mol<sup>-1</sup>) on model systems (*vide supra*). Finally, the binding of chloride in both receptors is both enthalpy and entropy driven. The entropic term is an important component to binding. This observation indicates the importance of the solvation and desolvation processes that take place in polar organic solvents i.e. acetone for the binding of chloride through hydrogen-bonding interactions in deep and polar aromatic clefts.

#### Conclusions

In summary, we report the synthesis of an unprecedented organometallic “two wall”  $\alpha,\alpha$ -calix[4]pyrrole **1** featuring a gold(I) phosphine covalently attached to one of its two *para*-ethynyl groups in the *meso*-aryl substituents. In DCM solution, the parent ligand **2** and its mono-gold(I) derivative **1** act as heteroditopic receptors in the binding of tetraalkylammonium chloride salts producing 1:1 ion-paired complexes. The two receptors show high selectivity and affinity for the binding of methyl-tri-octyl ammonium chloride (MTOACl) compared to tetra-butyl ammonium chloride (TBACl) owing to the better fit of the methyl group of the MTOA cation in the shallow aromatic cavity opposed to the anion binding site. Moreover, we calculated that the ClC1•TBA complex is energetically destabilized with respect to the ClC2•TBA analogue by ~ 0.6 kcal mol<sup>-1</sup> because of stronger repulsive chloride- $\pi$  interactions. The experimentally determined value is in agreement with the one derived from DFT calculations using model systems **4** and **5**. The increase in the negative ESP value at the centre of the phenyl ring displaying the *para*-gold(I) phosphine ethynyl substituent is responsible for this deleterious effect and possibly for the existence in solution of the ClC1•TBA/MTOA complexes as a mixtures of two conformers. In the chlorinated solvent, the binding constant values of ClC1•MTOA and ClC2•MTOA are too large (> 10<sup>4</sup> M<sup>-1</sup>) to be measured accurately using <sup>1</sup>H NMR spectroscopy. At  $\mu$ M concentrations, UV-vis titrations in DCM solution revealed the co-existence of the anionic chloride complex [ClC2] and its ion-paired ClC2•MTOA counterpart. We assessed their stability constant using an elaborated binding model. Unfortunately, the results of the UV-vis titrations of **1** in

DCM were hampered by spectroscopic changes resulting from a non-specific interaction between the chloride and the gold(I) aryl-ethynyl residue.

In acetone solution, compounds **1** and **2** mainly function as homotopic receptors for chloride. The stability constants of the anionic chloride complexes,  $[\text{ClC}1]^-$  and  $[\text{ClC}2]^-$  are estimated to be larger than  $10^4 \text{ M}^{-1}$  by  $^1\text{H}$  NMR experiments. The  $[\text{ClC}1]^-$  complex is also present as a mixture of two conformers in solution with a slight increase on the amount of the minor component in comparison to DCM. Using ITC experiments, we determined accurate but apparent binding constant values for the two anionic complexes and demonstrated that the cation effect of the salts is markedly reduced in this solvent. We also determined that in acetone the difference in energy between  $[\text{ClC}1]^-$  and  $[\text{ClC}2]^-$  is in the range of 1 – 0.5 kcal mol $^{-1}$  in favour of the later.

## Experimental Section

**Synthesis of [Au{10 $\alpha$ ,20 $\alpha$ -bis(4-ethynylphenyl)calix[4]pyrrole-(PTA)] (1).** A solution of  $[\text{AuCl}(\text{PTA})]$  (32 mg, 0.08 mmol) in  $\text{CH}_2\text{Cl}_2$  (5 mL) was added to a solution of KOH (5 mg, 0.089 mmol) and 10 $\alpha$ ,20 $\alpha$ -bis(4-ethynylphenyl)calix[4]pyrrole (50 mg, 0.083 mmol) in a mixture of MeOH (10 mL) and DCM (4 mL). After 2 hours of stirring at room temperature, the resulting pale yellow solution was concentrated to ca. 10 mL, and n-hexane (10 mL) was added to precipitate a pale yellow solid. The filtered solid was recrystallized in  $\text{CH}_2\text{Cl}_2$ /Hexane solution and isolated by filtration.<sup>46</sup> Yield: 60 % (45 mg).  $^1\text{H}$  NMR (400 MHz,  $(\text{CD}_3)_2\text{CO}$ ): 8.77 (br, 2H, N-H), 8.71 (br, 2H, N-H), 7.33 (d, 2H,  $J = 8.4$  Hz), 7.12 (d, 2H,  $J = 8.4$  Hz), 6.92 (d, 2H,  $J = 8.4$  Hz), 6.77 (d, 2H,  $J = 8.4$  Hz), 5.78 (m, 4H), 5.60 (s, 2H), 5.56 (s, 2H), 4.65-4.48 (d, 3H,  $J = 12.8$  Hz, N-CH $_2$ -N), 4.50-4.45 (d, 3H,  $J = 12.8$  Hz, N-CH $_2$ -N), 4.36 (s, 6H, P-CH $_2$ -N), 3.58 (s, 1H, C=C-H), 1.87 (s, 3H, CH $_3$ ), 1.83 (s, 3H, CH $_3$ ), 1.65 (s, 6H, CH $_3$ ), 1.48 (s, 6H, CH $_3$ ).  $^{31}\text{P}\{^1\text{H}\}$  NMR (162 MHz,  $(\text{CD}_3)_2\text{CO}$ ): -47.0 ppm. ESI-MS (+) m/z  $([\text{M} + \text{H}]^+)$  for  $\text{C}_{48}\text{H}_{51}\text{AuN}_7\text{P}$ : 954.40, found 954.40. IR (KBr,  $\text{cm}^{-1}$ ): 3413  $\nu$ (N-H), 3105  $\nu$ (C=C-H), 2092  $\nu$ (C=C), 1637  $\nu$ (C=O), 1590  $\nu$ (C=N).

**Theoretical calculations.** The energy-minimized structures shown in the manuscript were obtained using GAUSSIAN 09. The structures were optimized using DFT-dispersion method BP86-D3-def2-SVP level of theory and a continuum solvent model.

For full experimental details, please check the Supporting Information document.

## Acknowledgements

We thank Gobierno de España MINECO (projects CTQ2017-84319-P and CTQ2016-76120-P), FEDER funds (Projects CTQ2017-84319-P and CTQ2016-76120-P), the CERCA

Programme/Generalitat de Catalunya, and AGAUR (2017 SGR 1123) for financial support. Q. S. thanks the Chinese Research Council for a predoctoral fellowship (2017-06870013). We also thank Eduardo C. Escudero-Adán for X-ray crystallography data.

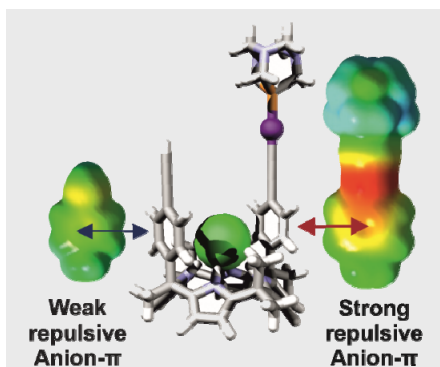
**Keywords:** Gold(I) phosphine • Calix[4]pyrrole • Supramolecular chemistry • Heteroditopic receptor • Anion- $\pi$  interactions

- P. A. Gale, J. L. Sessler, V. Kral and V. Lynch, *J. Am. Chem. Soc.* **1996**, *118*, 5140-5141.
- P. A. Gale, J. L. Sessler and V. Kral, *Chem. Commun.* **1998**, 1-8.
- Y.-D. Wu, D.-F. Wang and J. L. Sessler, *J. Org. Chem.* **2001**, *66*, 3739-3746.
- L. Adriaenssens, C. Estarellas, A. Vargas Jentzsch, M. Martínez Belmonte, S. Matile and P. Ballester, *J. Am. Chem. Soc.* **2013**, *135*, 8324-8330.
- L. Adriaenssens, G. Gil-Ramirez, A. Frontera, D. Quinonero, E. C. Escudero-Adán and P. Ballester, *J. Am. Chem. Soc.* **2014**, *136*, 3208-3218.
- Y. Han, G.-L. Wang, J.-J. Sun, J. Sun and C.-G. Yan, *Tetrahedron* **2013**, *69*, 10604-10609.
- J. S. Park, K. Y. Yoon, D. S. Kim, V. M. Lynch, C. W. Bielawski, K. P. Johnston and J. L. Sessler, *Proc. Natl. Acad. Sci. U. S. A.* **2011**, *108*, 20913-20917.
- G. Bruno, G. Cafeo, F. H. Kohnke and F. Nicolo, *Tetrahedron* **2007**, *63*, 10003-10010.
- J. R. Romero, G. Aragay and P. Ballester, *Chem. Sci.* **2017**, *8*, 491-498.
- S. K. Kim and J. L. Sessler, *Acc. Chem. Res.* **2014**, *47*, 2525-2536.
- I. W. Park, J. Yoo, S. Adhikari, J. S. Park, J. L. Sessler and C. H. Lee, *Chem-Eur J* **2012**, *18*, 15073-15078.
- D. E. Gross, F. P. Schmidtchen, W. Antonius, P. A. Gale, V. M. Lynch and J. L. Sessler, *Chem. Eur. J.* **2008**, *14*, 7822-7827.
- J. L. Sessler, D. E. Gross, W.-S. Cho, V. M. Lynch, F. P. Schmidtchen, G. W. Bates, M. E. Light and P. A. Gale, *J. Am. Chem. Soc.* **2006**, *128*, 12281-12288.
- R. Custelcean, L. H. Delmau, B. A. Moyer, J. L. Sessler, W.-S. Cho, D. Gross, G. W. Bates, S. J. Brooks, M. E. Light and P. A. Gale, *Angew. Chem., Int. Ed.* **2005**, *44*, 2537-2542.
- S. L. Cockroft, *Chem* **2017**, *3*, 383-384.
- R. B. P. Elmes and K. A. Jolliffe, *Chem. Commun.* **2015**, *51*, 4951-4968.
- M. Ferrer, L. Giménez, A. Gutiérrez, J. C. Lima, M. Martínez, L. Rodríguez, A. Martín, R. Puttreddy and K. Rissanen, *Dalton Trans.* **2017**, *46*, 13920-13934.
- F. K.-W. Hau, K.-L. Cheung, N. Zhu and V. W.-W. Yam, *Organic Chemistry Frontiers* **2019**, *6*, 1205-1213.
- V. W.-W. Yam, K.-L. Cheung, L.-H. Yuan, K. M.-C. Wong and K.-K. Cheung, *Chem. Commun.* **2000**, 1513-1514.
- X. He, W. H. Lam, N. Zhu and V. W.-W. Yam, *Chem. Eur. J.* **2009**, *15*, 8842-8851.
- J. C. Lima and L. Rodríguez, *Chem. Soc. Rev.* **2011**, *40*, 5442-5456.
- S. Wan and W. Lu, *Angew. Chem., Int. Ed.* **2017**, *56*, 1784-1788.
- C. J. Borman, R. Custelcean, B. P. Hay, N. L. Bill, J. L. Sessler and B. A. Moyer, *Chem. Commun.* **2011**, *47*, 7611-7613.
- V. Valderrey, E. C. Escudero-Adán and P. Ballester, *Angew. Chem., Int. Ed.* **2013**, *52*, 6898-6902.
- V. Valderrey, E. C. Escudero-Adán and P. Ballester, *J. Am. Chem. Soc.* **2012**, *134*, 10733-10736.
- E. Vergara, S. Miranda, F. Mohr, E. Cerrada, E. R. T. Tiekink, P. Romero, A. Mendía and M. Laguna, *Eur. J. Inorg. Chem.* **2007**, *2007*, 2926-2933.
- R. Gavara, J. C. Lima and L. Rodríguez, *Photochem. Photobiol. Sci.* **2016**, *15*, 635-643.

- 28 L. Rodríguez, M. Ferrer, R. Crehuet, J. Anglada and J. C. Lima, *Inorg. Chem.* **2012**, *51*, 7636-7641.
- 29 E. Aguiló, A. J. Moro, M. Outis, J. Pina, D. Sarmiento, J. S. Seixas de Melo, L. Rodríguez and J. C. Lima, *Inorg. Chem.* **2018**, *57*, 13423-13430.
- 30 S. Wan and W. Lu, *Angew. Chem., Int. Ed.* **2017**, *56*, 1784-1788.
- 31 Y. Liu, A. Sengupta, K. Raghavachari and A. H. Flood, *Chem* **2017**, *3*, 411-427.
- 32 Protonics Software <http://www.hyperquad.co.uk/HypSpec.htm>
- 33 R. M. Fuoss, *J. Am. Chem. Soc.* **1958**, *80*, 5059-5061.
- 34 A. D. Becke, *Phys. Rev. A* **1988**, *38*, 3098-3100.
- 35 J. P. Perdew, *Phys Rev B* **1986**, *33*, 8822-8824.
- 36 S. Grimme, J. Antony, S. Ehrlich and H. Krieg, *J. Chem. Phys.* **2010**, *132*, 154104.
- 37 G. W. T. M. J. Frisch, H. B. Schlegel, G. E. Scuseria, M. A. Robb, J. R. Cheeseman, G. Scalmani, V. Barone, G. A. Petersson, H. Nakatsuji, X. Li, M. Caricato, A. Marenich, J. Bloino, B. G. Janesko, R. Gomperts, B. Mennucci, H. P. Hratchian, J. V. Ortiz, A. F. Izmaylov, J. L. Sonnenberg, D. Williams-Young, F. Ding, F. Lipparini, F. Egidi, J. Goings, B. Peng, A. Petrone, T. Henderson, D. Ranasinghe, V. G. Zakrzewski, J. Gao, N. Rega, G. Zheng, W. Liang, M. Hada, M. Ehara, K. Toyota, R. Fukuda, J. Hasegawa, M. Ishida, T. Nakajima, Y. Honda, O. Kitao, H. Nakai, T. Vreven, K. Throssell, J. A. Montgomery, Jr., J. E. Peralta, F. Ogliaro, M. Bearpark, J. J. Heyd, E. Brothers, K. N. Kudin, V. N. Staroverov, T. Keith, R. Kobayashi, J. Normand, K. Raghavachari, A. Rendell, J. C. Burant, S. S. Iyengar, J. Tomasi, M. Cossi, J. M. Millam, M. Klene, C. Adamo, R. Cammi, J. W. Ochterski, R. L. Martin, K. Morokuma, O. Farkas, J. B. Foresman, and D. J. Fox, Gaussian, Inc. in *Gaussian 09, Revision A 02*, Vol. Wallingford CT, **2016**.
- 38 <sup>1</sup>H NMR titrations of model compound **6** with TBACl and MTOACl in DCM or acetone do not show noticeable changes in the acquired <sup>1</sup>H NMR spectra of **6** before and after the addition of the salts. These findings indicate that Au chloride interactions are not significant.
- 39 CCDC 1965694-1965695 contain the supplementary crystallographic data for this paper. These data are provided free of charge by the Cambridge Crystallographic Data Centre.
- 40 The <sup>1</sup>H NMR titrations of the parent ligand **2** in acetone solution with the two salts provided identical results (see SI for details). We concluded that **2** acts mainly as homotopic receptor for ion pair binding in acetone and that the stability constant of the anionic chloride complex [Cl<sup>-</sup>·**2**] is larger than 10<sup>4</sup> M<sup>-1</sup>.
- 41 A. Frontera, P. Gamez, M. Mascal, T. J. Mooibroek and J. Reedijk, *Angew. Chem., Int. Ed.* **2011**, *50*, 9564-9583.
- 42 A. Frontera and P. Ballester in *CHAPTER 3 Anion-π Interactions: Theoretical Studies, Supramolecular Chemistry and Catalysis, Vol.* The Royal Society of Chemistry, **2017**, pp. 39-97.
- 43 <sup>1</sup>H NMR titration experiments of **1** with tetraethylammonium chloride (TEACl) in acetone also supports the presence of two conformers for the chloride complex in solution (see Supporting information).
- 44 The <sup>1</sup>H NMR spectrum acquired after the solid-liquid extraction of tetramethyl ammonium chloride (TMACl) by **1** dissolved in acetone was similar to the one obtained after the addition of 1-2 equiv. of MTOACl to an acetone solution of the same receptor. The <sup>1</sup>H NMR spectrum displayed two different sets of proton signals. This observation indicated the presence of the anionic complex in solution as a mixture of two conformers (see Supporting Information)
- 45 We also performed ITC experiments of receptors **1** and **2** with tetra-ethyl ammonium chloride (TEACl) in acetone. In both cases, the binding constant values obtained from the fit of the experimental data to a simple 1:1 binding model are between those determined for MTOACl and TBACl (see Supporting Information).
- 46 For some reaction runs, the isolation of pure **1** required multiple precipitations and produced lower yields. This result suggests that the initially isolated pale yellow solid is a mixture of starting material, mono- and bis-gold(I) aryl-ethynyl phosphine complex. An increase in the number of equivalents of AuCl(PTA) (up to 2.3 equiv) allowed the isolation, although in low yields (< 20 %), of the bis-gold(I) aryl-ethynyl phosphine derivative after multiple precipitations.

## FULL PAPER

The synthesis and binding studies of an unprecedented organometallic “two wall” calix[4]pyrrole bearing one gold(I) phosphine residue at the upper rim is reported. The increase in the negative value of the ESP at the centre of the substituted aromatic wall produces stronger repulsive chloride- $\pi$  interactions in the resulting complexes compared to the parent ligand.



Qingqing Sun, Gemma Aragay, Andrea Pinto, Elisabet Aguiló, Laura Rodríguez\* and Pablo Ballester\*

Page No. – Page No.

**Influence of the Attachment of a Gold(I) Phosphine Moiety at the Upper Rim of a Calix[4]pyrrole on the Binding of Tetraalkylammonium Chloride Salts**